

## NOTICE TO MARINERS

No 05(T) of 2017

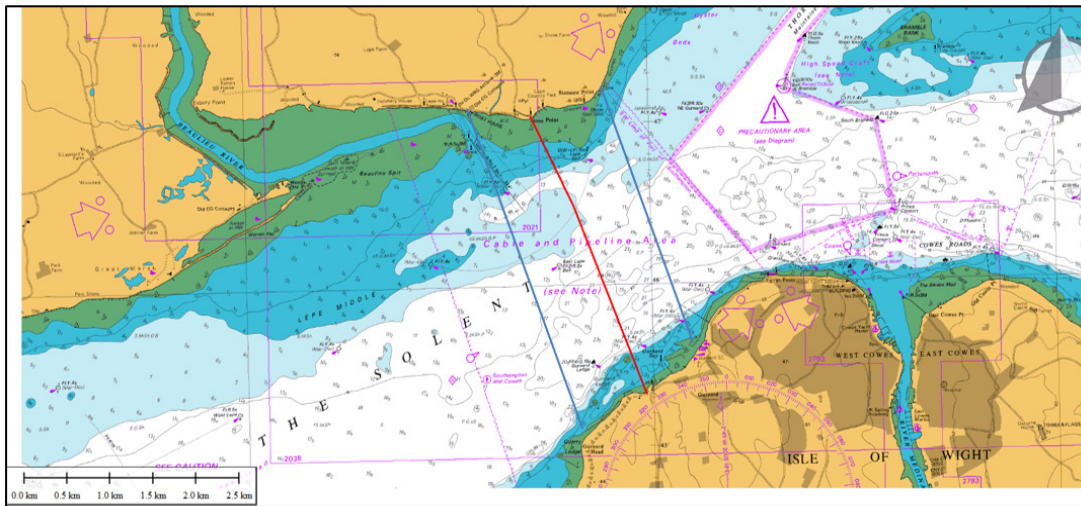
### Port of Southampton - Western Solent

#### Survey Operations

17<sup>th</sup> to 20<sup>th</sup> February 2017

**NOTICE IS HEREBY GIVEN** that between the 17<sup>th</sup> February and 20<sup>th</sup> February 2017 Bathymetric and magnetometry survey runs will be taking place between Lepe Beach and across the western Solent to Gurnard Isle of Wight.

The operations are bounded by the following positions (see chartlet and positions below) and covers the areas marked on Chart BS2037 as containing 'Cable and Pipeline'.



The area of activity is bounded by the following positions:

50° 45'.37.1"N 001°19'32.78"W

50° 47'08.29"N 001° 20'35.34"W

50° 47'05.98"N 001° 21'51.21"W

50° 44'05.63"N 001° 20'40.43"W

The survey operations will be carried out by the FPV Morven, see image below, and will involve 12 hour (07:00 – 19:00 approx.) operations including a 200mtr magnetometry tow line.



The FPV Morven will maintain a listing watch on VHF channels 11 and 12 and will display lights and shapes as required by the International Regulations for Preventing Collisions at sea.

All mariners are requested to keep a good lookout and pass well clear of operation. If this is not possible for navigational safety reasons, then the FPV Morven can be contacted on VHF channel 12 to arrange safe passing.

This notice will be self-cancelling on 21<sup>st</sup> February 2017

**Vessel Traffic Services Centre  
Berth 37, Eastern Docks  
Southampton**

**Captain Martin Phipps  
Harbour Master**

16<sup>th</sup> February 2017

**Owners, Agents, Charterers, Marinas, Yacht Clubs and Recreational Sailing Organisations should ensure that the contents of this Notice are made known to the masters or persons in charge of their vessels or craft.**