

## NOTICE TO MARINERS

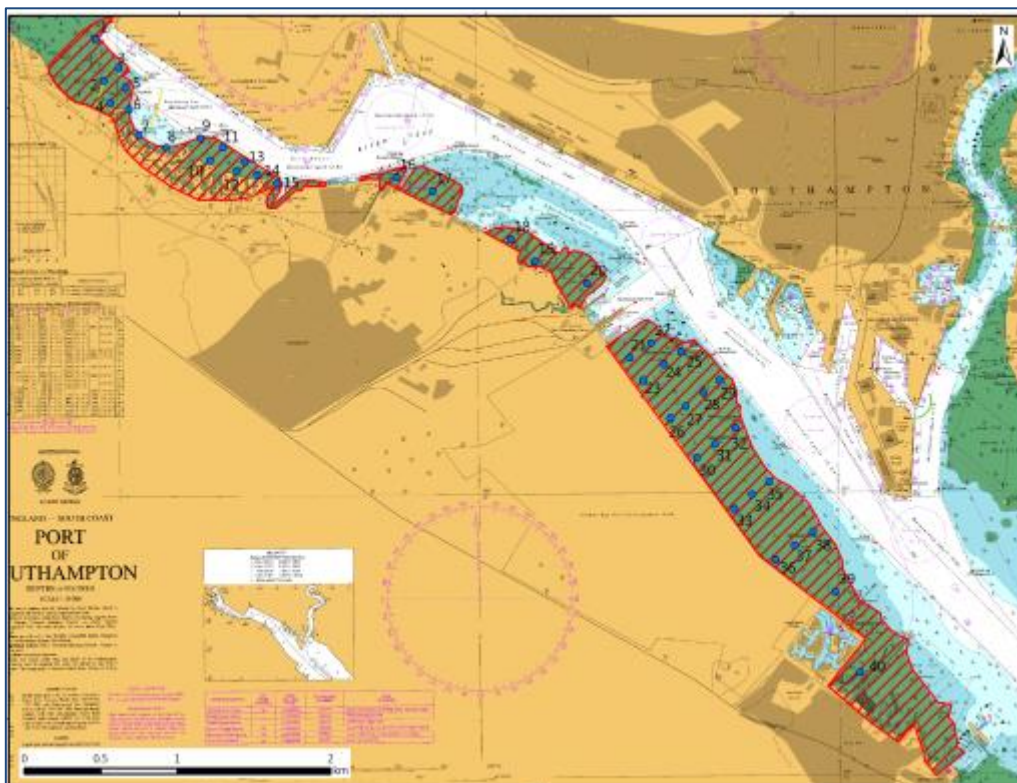
### No 20(T) of 2018

## Port of Southampton - Benthic Sampling

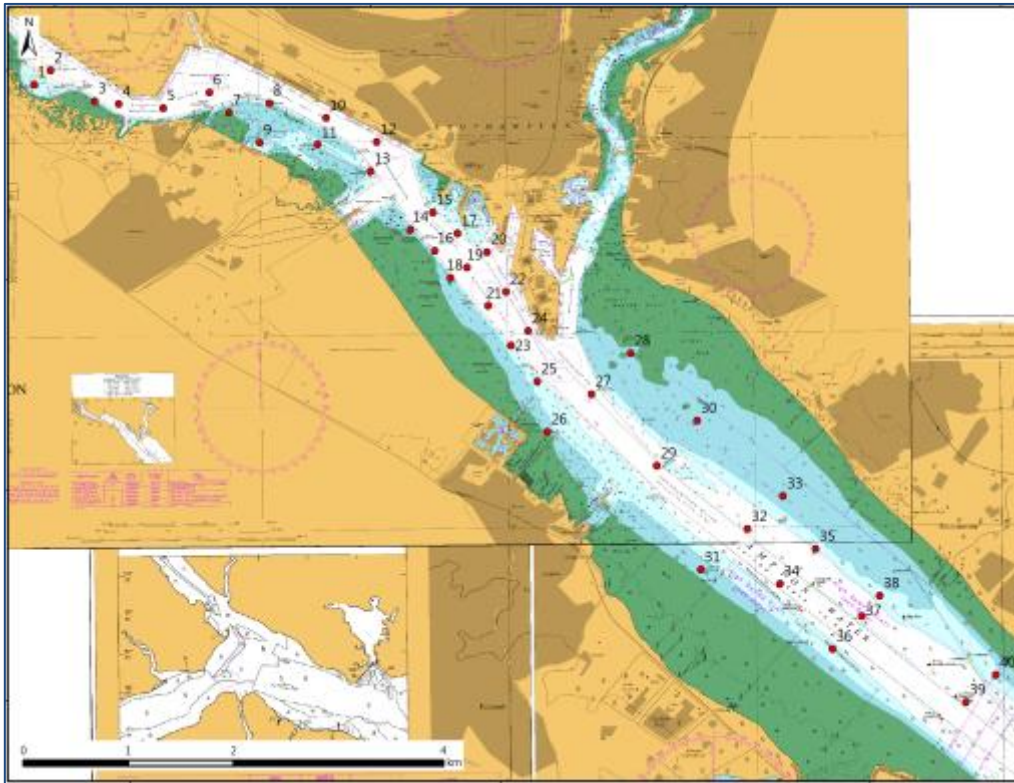
**NOTICE IS HEREBY GIVEN** that a comprehensive benthic ecology baseline survey of Southampton Docks and Southampton Water will be conducted in June 2018. The surveys will involve the following survey elements:

- Intertidal Core Sampling: The collection of hand held core samples for faunal and sediment analysis from between Eling and Hythe using a hovercraft.
- Subtidal Grab Sampling: The collection of seabed samples from a vessel for faunal and sediment analysis between Eling and Fawley.

The surveys will be undertaken from mid to the end of June 2018. The intertidal hovercraft work is planned for 14-17<sup>th</sup> June, and the subtidal sampling 20<sup>th</sup>-23<sup>rd</sup> June. Attached are maps of the proposed intertidal core (40 stations) and subtidal grab sampling locations (40 stations).



Intertidal Core Sample Locations



Subtidal Grab Sample Locations

This notice will be self-cancelling on 24<sup>th</sup> June 2018.

**Vessel Traffic Services Centre  
Ocean Gate, Atlantic Way  
Southampton**

**Captain P J A Buckley  
Harbour Master**

1<sup>st</sup> June 2018

**Owners, Agents, Charterers, Marinas, Yacht Clubs and Recreational Sailing Organisations should ensure that the contents of this Notice are made known to the masters or persons in charge of their vessels or craft.**

[www.southamptonvts.co.uk](http://www.southamptonvts.co.uk)