

NOTICE TO MARINERS

No 6(T) of 2018

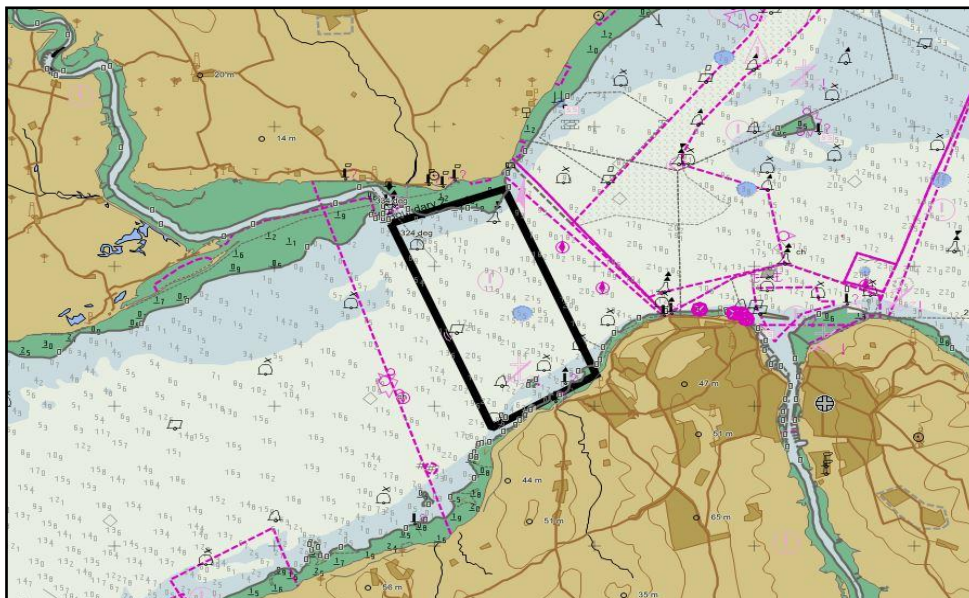
Port of Southampton - Western Solent

UXO Survey Operations

20th to 25th March 2018

NOTICE IS HEREBY GIVEN that between the 20th March 2018 and 25th March 2018 UXO survey operations will be taking place in the western Solent, offshore of Lepe Country Park, generally inshore of the 10m contour.

The operations are bounded by the following positions (see chartlet and positions below) and covers the areas marked on Chart BS2037 as containing 'Cable and Pipeline'.



The area of activity is bounded by the following positions:

50°47.041' N, 001°21.206' W

50°47.062' N, 001°21.128' W

50°46.781' N, 001°20.942' W

50°46.760' N, 001°21.020' W

The survey operations will be carried out from the survey vessel, Wessex Explorer and will involve 12-hour operations.



Survey sensors will be towed up to 100m from the stern of the vessel. Therefore, all mariners are requested to pass well clear of the vessel. The Wessex will maintain a listening watch on VHF channel 12 and should be contacted to arrange safe passing where necessary.

The vessel will display the relevant lights and shapes when engaged in survey operations and as required by the International Regulations for Preventing Collisions at sea.

This notice will be self-cancelling on 25th March 2018.

**Vessel Traffic Services Centre
Ocean Gate, Atlantic Way
Southampton**

**Captain P J A Buckley
Harbour Master**

16 March 2018

Owners, Agents, Charterers, Marinas, Yacht Clubs and Recreational Sailing Organisations should ensure that the contents of this Notice are made known to the masters or persons in charge of their vessels or craft.