

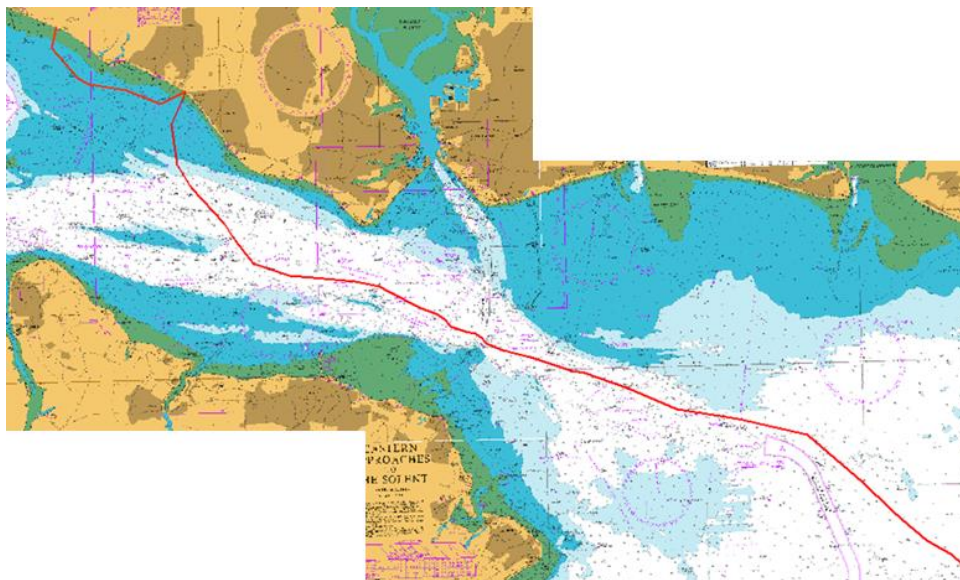
## **NOTICE TO MARINERS**

**No 32(T) of 2017**

### **Cable Route Survey – Eastern Solent**

**NOTICE IS HEREBY GIVEN** jointly with the Queen's Harbour Master Portsmouth that a pre-installation survey for a high voltage electricity cable to run between England and France will take place in the Solent as part of the IFA2 interconnector project being conducted for the National Grid. Works will commence at the end of August 2017 and are expected to be clear of the Solent by the end of September 2017.

The survey will focus on an area close to the shore between Chilling in Southampton Water to just west of the Daedalus Slipway at Lee-on-the-Solent and then later, will proceed eastwards through the central Solent in vicinity of the main channel. An outline of the survey route is shown below.



The vessels carrying out the survey will be the nearshore survey vessel **SV SOLENT GUARDIAN** (Call Sign 2GDK7); the multi-cat tug **M/V WILLENDEAVOUR** (Call Sign MMPC) and the jack-up barge **HAVEN SEAJACK 4** (Call Sign 2DUL9). When surveying, they may be severely restricted in their ability to manoeuvre and are to be treated accordingly. In particular, **M/V WILLENDEAVOUR** will collect core samples along the route during which time she will be required to remain stationary for up to 30 minutes at a time. Vessels are requested to pass at a safe speed and distance.

QHM Harbour Control (callsign QHM) and VTS Southampton (Callsign VTS) will receive regular updates and can be contacted on VHF Channels 11 and 12 respectively. Additionally, the survey vessels will monitor VHF Channel 16 at all times.

Cancel this LNTM 15 Oct 2017.

**Vessel Traffic Services Centre  
Ocean Gate, Atlantic Way  
Southampton**

**Captain M Phipps  
Harbour Master**

25<sup>th</sup> August 2017

**Owners, Agents, Charterers, Marinas, Yacht Clubs and Recreational Sailing Organisations should ensure that the contents of this Notice are made known to the masters or persons in charge of their vessels or craft.**