

# Southampton Water and its approaches

For centuries the Port of Southampton has played a vital role in British sea trade and is situated on one of the finest natural harbours in the world. Southampton Water and its approaches offer any leisure user excellent sailing waters and numerous facilities from the Isle of Wight to the Rivers Test and Itchen.

This guide is designed to provide yachtsmen with a level of information which will contribute to the safe navigation and enjoyment of the area.

## Caution One

### Precautionary Area

All vessels over 150m in length, whilst navigating this area, will have a MOVING PROHIBITED ZONE 1000m ahead and 100m to either side. These vessels are required to display a black cylinder by day and three all round red lights in a vertical line at night. Vessels under 20m are prohibited from entering the Moving Prohibited Zone.

Whenever possible, vessels over 150m will be escorted by a patrol launch showing a blue flashing light. The absence of the launch will not invalidate the Moving Prohibited Zone. (see LNTM No. 3/2014)

## Caution Two

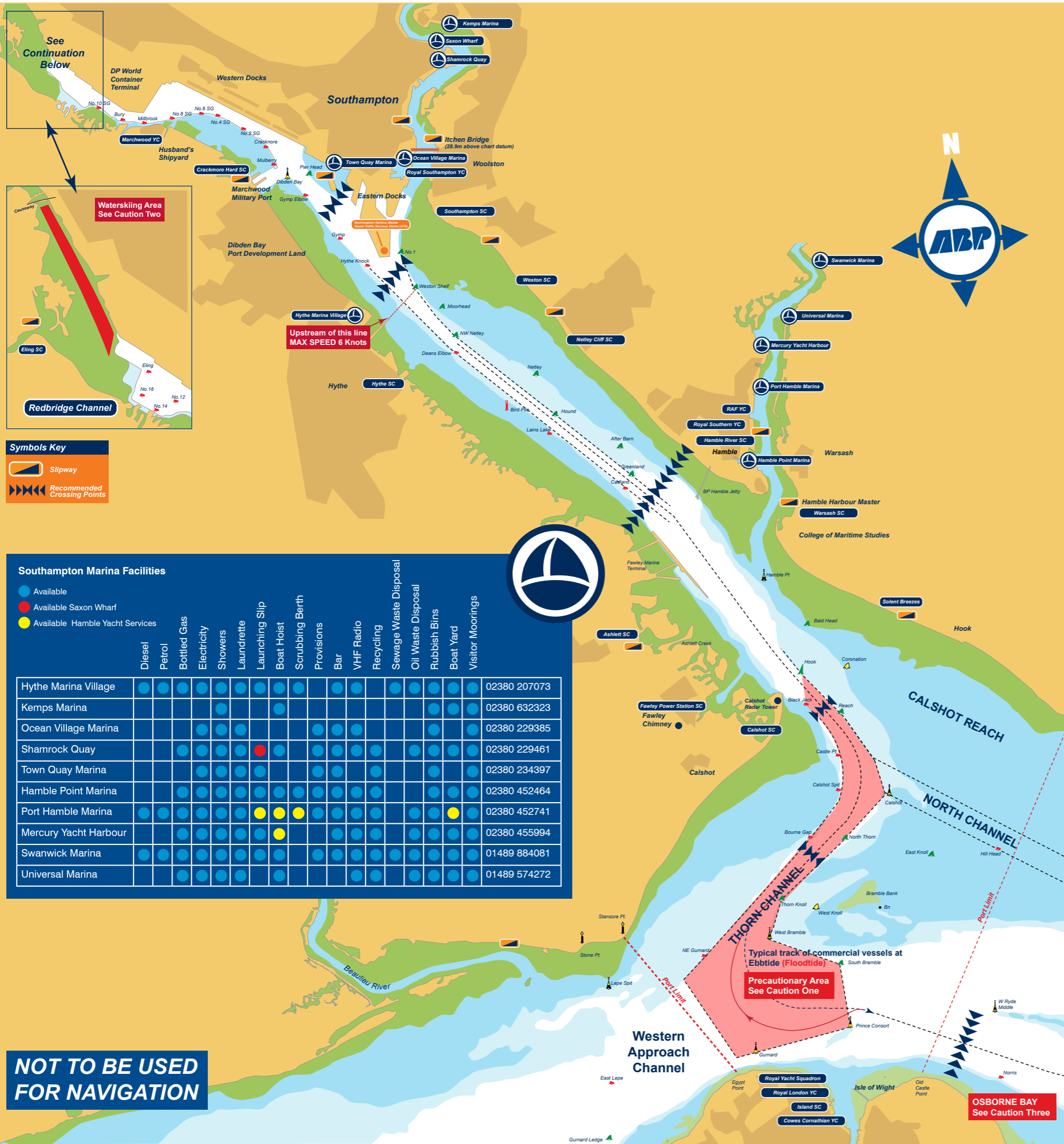
### Waterskiing

Waterskiing is not permitted in the port except in the designated area at Redbridge or with the written permission of the Harbour Master. It is an offence under Harbour Bye-Laws to waterski outside this area and offenders may be prosecuted. The Bye-Laws also require there to be two people in any boat towing a waterski.

Redbridge – This area is usable from approximately 1 hour before until 2 hours after the 1st High Water. There are some obstructions in the area and large scale Admiralty Charts should be consulted beforehand.

## Caution Three

**Osborne Bay:** This area is not recommended as a small craft anchorage due to the possibility of wash from passing vessels.



**Symbols Key**

- Slipway
- Recommended Crossing Points

**Southampton Marina Facilities**

● Available  
● Available Saxon Wharf  
● Available Hamble Yacht Services

	Diesel	Petrol	Bottled Gas	Electricity	Showers	Laundrette	Launching Slip	Boat Hoist	Scrubbing Berth	Provisions	Bar	VHF Radio	Recycling	Sewage Waste Disposal	Oil Waste Disposal	Rubbish Bins	Boat Yard	Visitor Moorings	
Hythe Marina Village	●	●	●	●	●	●	●	●	●	●	●	●	●	●	●	●	●	●	02380 207073
Kemp's Marina	●	●	●	●	●	●	●	●	●	●	●	●	●	●	●	●	●	●	02380 632323
Ocean Village Marina	●	●	●	●	●	●	●	●	●	●	●	●	●	●	●	●	●	●	02380 229385
Shamrock Quay	●	●	●	●	●	●	●	●	●	●	●	●	●	●	●	●	●	●	02380 229461
Town Quay Marina	●	●	●	●	●	●	●	●	●	●	●	●	●	●	●	●	●	●	02380 234397
Hamble Point Marina	●	●	●	●	●	●	●	●	●	●	●	●	●	●	●	●	●	●	02380 452464
Port Hamble Marina	●	●	●	●	●	●	●	●	●	●	●	●	●	●	●	●	●	●	02380 452741
Mercury Yacht Harbour	●	●	●	●	●	●	●	●	●	●	●	●	●	●	●	●	●	●	02380 455994
Swanwick Marina	●	●	●	●	●	●	●	●	●	●	●	●	●	●	●	●	●	●	01489 884081
Universal Marina	●	●	●	●	●	●	●	●	●	●	●	●	●	●	●	●	●	●	01489 574272

**NOT TO BE USED FOR NAVIGATION**