

## NOTICE TO MARINERS

No 16(T) of 2017

### Round the Island Race: Saturday 1<sup>st</sup> July 2017

#### Central Solent - Traffic Restrictions

**NOTICE IS HEREBY GIVEN** jointly by the Queen's Harbour Master Portsmouth, the Cowes Harbour Master and the Harbour Master ABP Southampton that the Round the Island Race 2017 will start from Cowes between 0530 and 0710 on Saturday 1<sup>st</sup> July 2017. About 1700 yachts are expected to take part in the Race.

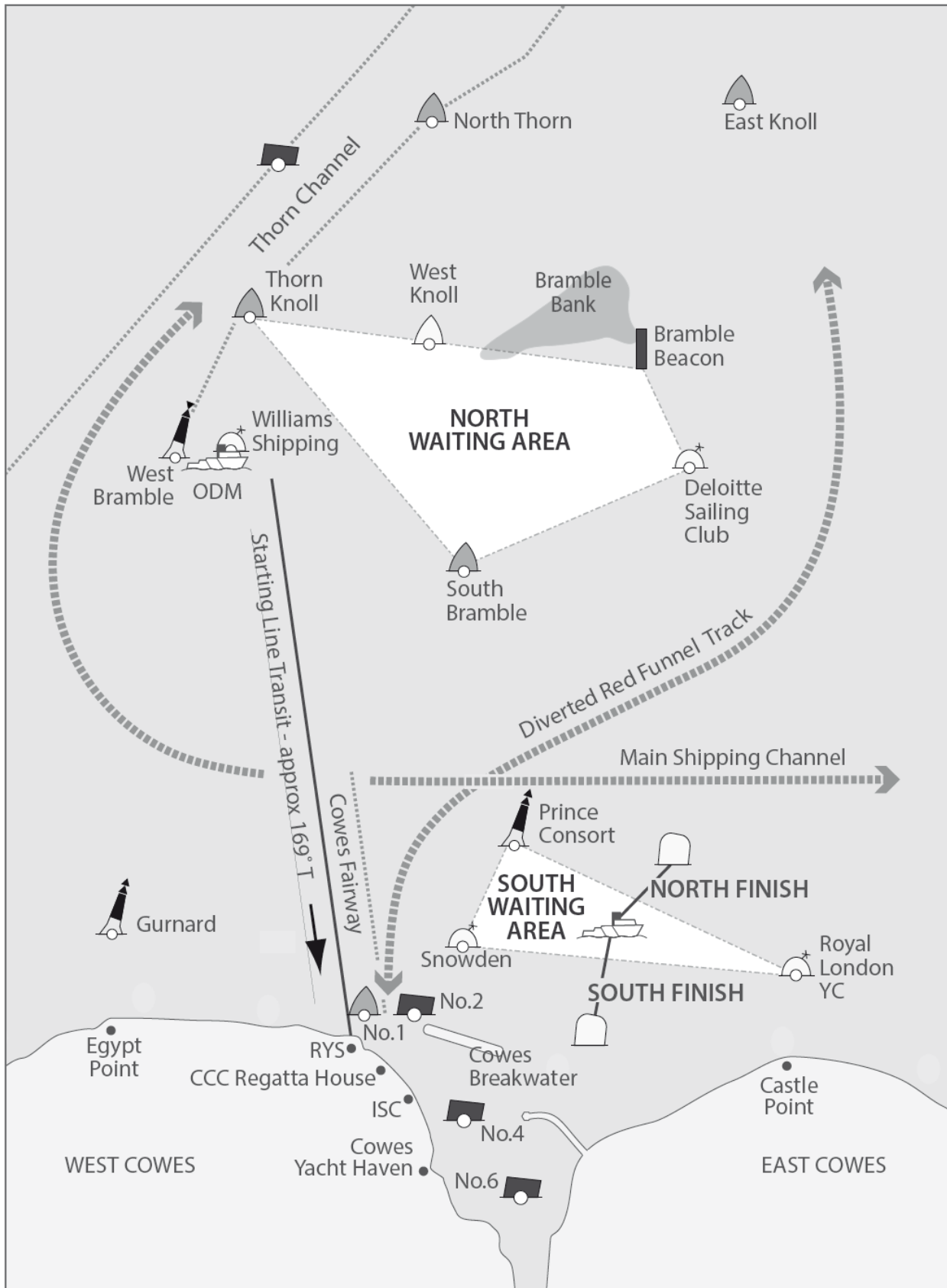
In order to control the congestion that is likely to arise in the Central Solent, during the start period and throughout the day, the following procedures will be adopted:

1. The start line extends from the Island shore at the Royal Yacht Squadron to an outer distance mark close to Williams Shipping Buoy.
2. Due to the number of competitors taking part, the various class starting times will be staggered to take place at 10-minute intervals between 0530hrs and 0710hrs.
3. The anti-clockwise course around the Isle of Wight will be from Cowes west-about and back to Cowes. Turning points for the race are at the Needles Lighthouse, St Catherine's Point and Bembridge Ledge Buoy.
4. In order to separate the competitors from any commercial traffic movements intending to pass through the Central Solent, or bound to or from the Port of Southampton, during the starting period, **Masters of vessels not directly involved in the event are to arrange to be clear of the start area by 0500hrs and are not to enter the start area until after 0730hrs or when the bulk of competitors have cleared the area.**

**Masters of Red Funnel Ferries and Commanders of Red Jets are to avoid passing through the start area and are to arrive at/or leave Cowes passing to the east of the Bramble Bank during the period 0500 - 0730.**

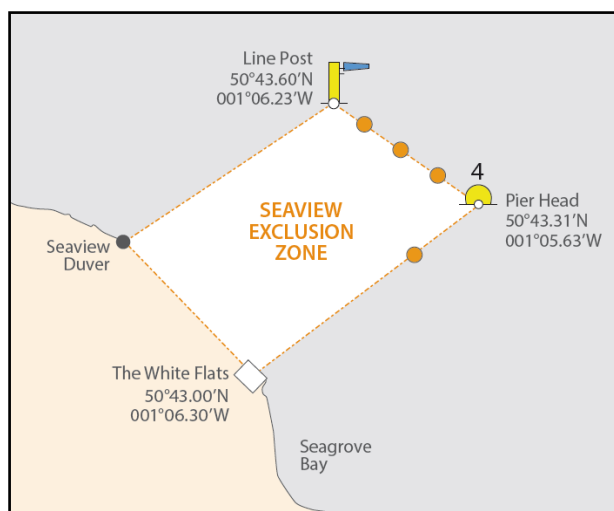
5. It has been agreed with the organisers that all competitors awaiting their class starting time will proceed to designated holding / waiting areas (as on Chartlet 1 below), to avoid congestion in the main navigable channel. All competitors will be equipped with VHF radio and will keep a listening watch on VHF Channel 22, in the event that a recall or postponement becomes necessary.

Charlet 1



6. Whilst the main bulk of the fleet of yachts is expected to pass the Bembridge Ledge Buoy between 1300 and 1700 and the peak finishing time at Cowes is likely to be between 1500 and 1900, it should be noted that the earliest finish could be around 0830 and that the finish limit time for this year is 2200. Hence, there will be increased levels of recreational activity within the Central Solent area throughout this period.
7. When rounding Seaview all competitors must remain to seaward of the mooring area indicated on Chartlet 2. The area is indicated by a box originating from the shoreline at the north end of Seagrove Bay (the white flats) in approximate position 50° 43.00'N, 001°06.30'W, out to 'Pier Head' which is a yellow spherical buoy marked with numeral '4' (in approximate position 50°43.31'N, 001°05.63'W), NW to the 'Line Post' which is a yellow post with blue windsock (in approximate position 50°43.60'N, 001°06.23'W), then directly back to the shoreline at Seaview Duver. One orange inflatable will be laid on the eastern side of the box and three orange inflatables will be equally spaced between Pier Head and the Line Post on the northern side of the box. Competing yachts disregarding the box and entering the Seaview mooring area will be subject to protest.

### Chartlet 2



8. All spectator craft not taking part in the race are to keep well clear of the start area or are to proceed to one of the designated holding areas, as depicted on Chartlet 1, and keep clear of the Main Navigational Channel.

Further information and updates on the 'Round the Island Race', both ahead of and on Race Day, are available at [www.roundtheisland.org.uk](http://www.roundtheisland.org.uk)

This notice will be self-cancelling on 2<sup>nd</sup> July 2017.

**Vessel Traffic Services Centre  
Berth 37, Eastern Docks  
Southampton**

**Captain M Phipps  
Harbour Master**

12<sup>th</sup> June 2017

**Owners, Agents, Charterers, Marinas, Yacht Clubs and Recreational Sailing Organisations should ensure that the contents of this Notice are made known to the masters or persons in charge of their vessels or craft.**