

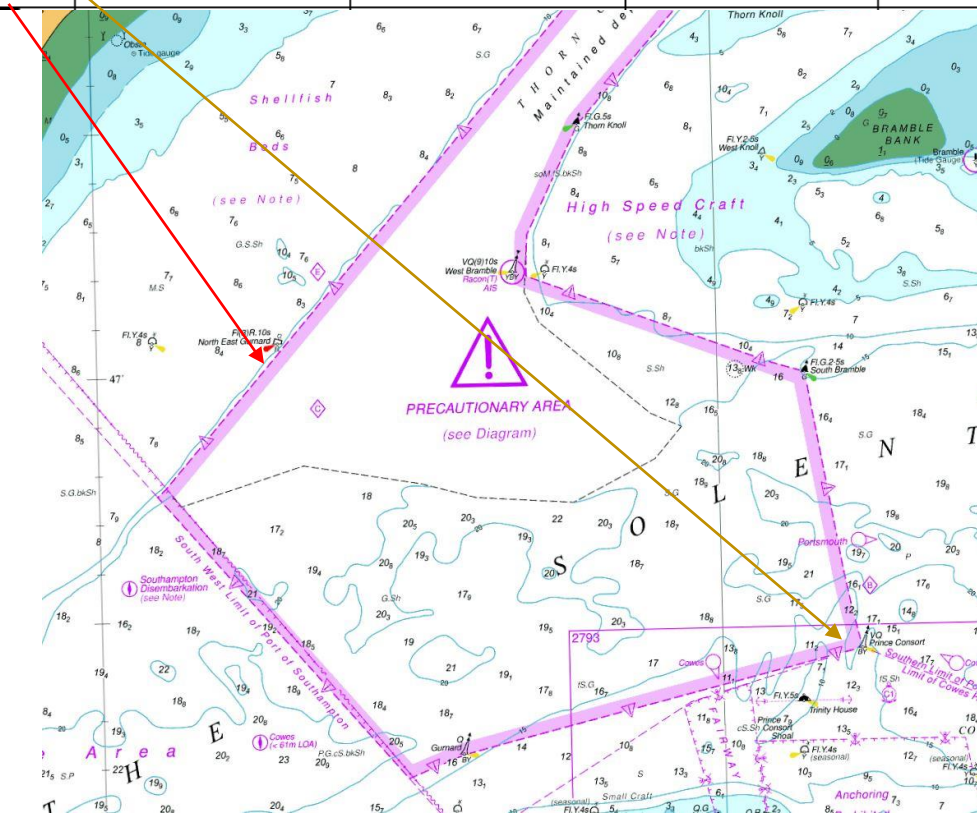
## Notice to Mariners No 90(T) of 2021

### Port of Southampton – Seabed Monitoring Surveys – November 2021 – January 2022

**Notice is hereby given:** That two seabed frames will be deployed within Southampton Water at the locations indicated at Figure 1. Each of the frames will be mobilized with an Acoustic Doppler Current Profilers, (ADCP) system observing both currents through the water column and waves at the surface. The frames will be on the seabed on the edges of the precautionary area and stand 0.8m high off the seabed.

These Frames will be Deployed by the Port Workboat Spartina on the 25/11/2021

B	449960	97400	50° 46.44163' N	1° 17.56924' W
C	447830	98530	50° 47.06206' N	1° 19.37277' W



Vessels will maintain a listening watch on VHF Channel 12 throughout operations. Fisherman are advised not to trawl in the vicinity of this equipment.

24<sup>th</sup> November 2021

**Vessel Traffic Services Centre  
Ocean Dock, Atlantic Way  
Southampton**

**Steven Masters  
Harbour Master**

Owners, Agents, Charterers, Marinas, Yacht Clubs and Recreational Sailing Organisations should ensure that the contents of this Notice are made known to the masters or persons in charge of their vessels or craft.