

NOTICE TO MARINERS No 27 of 2022
Port of Southampton

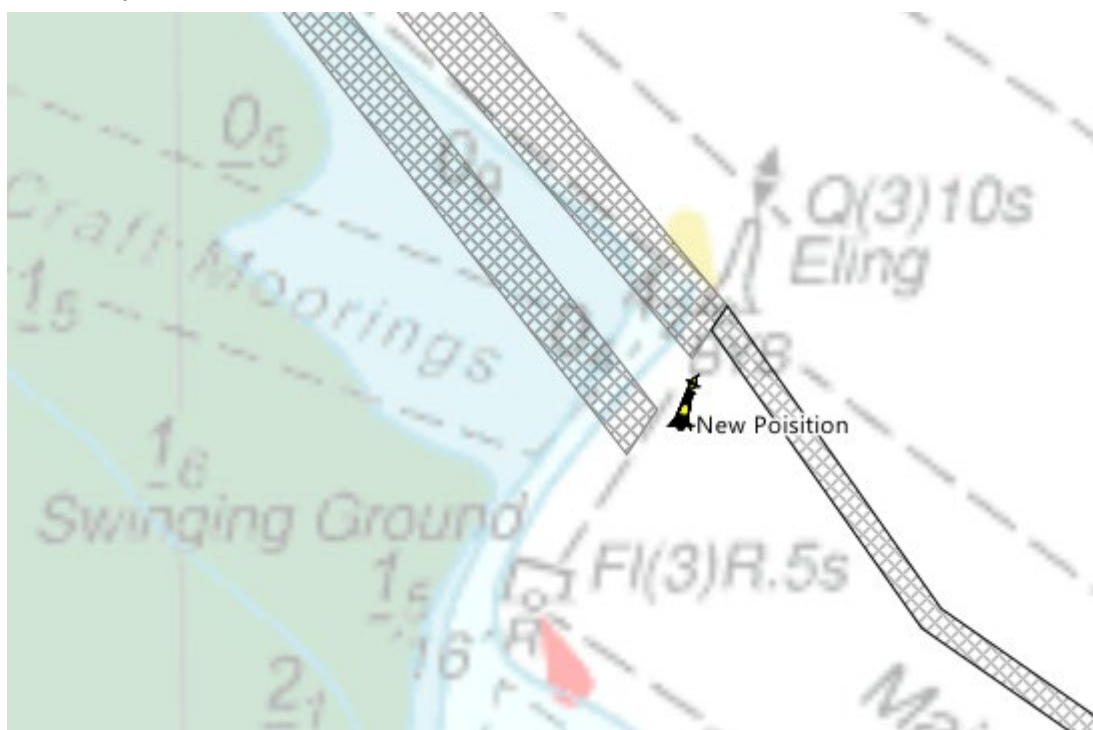
ELING East Cardinal Buoy Relocation

NOTICE IS HEREBY GIVEN that the ELING East Cardinal buoy will be moved permanently approx. 40m Southwest on 26/01/2022 from its current position 50°54.475'N, 001°27.844'W to its new location:

50° 54.455'N, 001° 27.858'W

This is to mark the new channel profile and tug shelf in Southampton Container Terminal following current dredging operations.

Vessels are requested to proceed with caution when navigating in the vicinity of the Bury Swinging Ground. Ahead of their passage, mariners may also request shipping information from Southampton VTS on VHF Channel 12.



Vessel Traffic Services Centre
Ocean Dock, Atlantic Way
Southampton

Steven Masters
Harbour Master

26th January 2022

Owners, Agents, Charterers, Marinas, Yacht Clubs and Recreational Sailing Organisations should ensure that the contents of this Notice are made known to the masters or persons in charge of their vessels or craft.