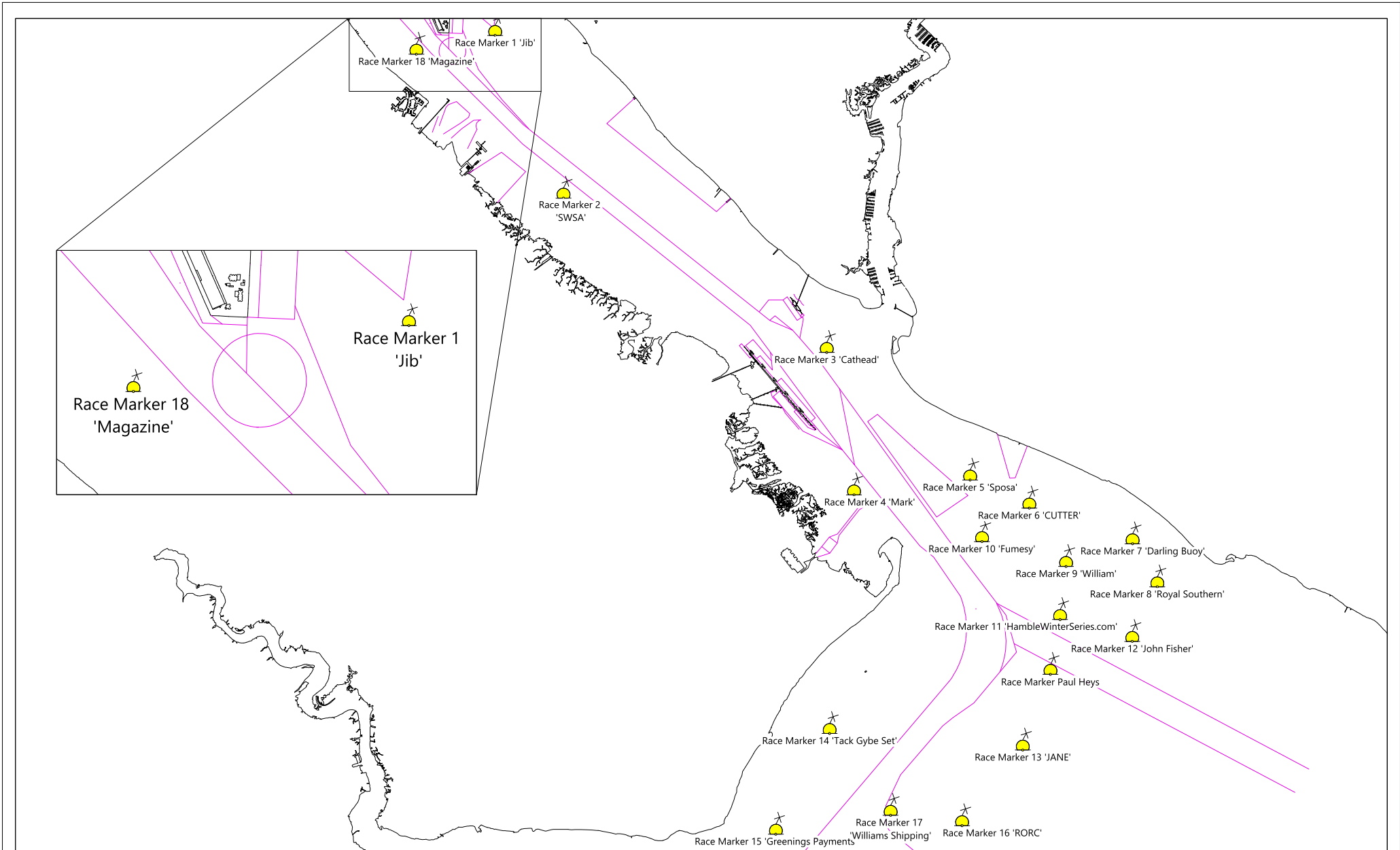


NOTICE TO MARINERS No 29 of 2022
Port of Southampton

Southampton Water & Central Solent Seasonal Race Markers

NOTICE IS HEREBY GIVEN that the following buoys are established by ABP for yacht racing purposes to avoid the necessity of using the navigation buoys marking the dredged channel in Southampton Water and Central Solent as yacht racing turning marks. These buoys are all spherical, yellow in colour, and equipped with yellow 'X' topmarks. Additionally they are fitted with IALA recommended retro-reflective tape and lit with the following characteristic: Fl.Y.4s. Please be aware that there are changes to names and positions from previous years.

ABP Number	SCRA Number	Current Sponsor Name (subject to change)	Position (WGS84)	Bearing and Distance from SOUTHAMPTON VTS MAST 50° 53.00'N 001° 23.66'W
1	7F	Jib	50° 52.96'N 001° 23.06'W	094.2° (T) x 710 metres
2	7N	SWSA	50° 51.76'N 001° 22.28'W	143.6° (T) x 2820 metres
18	75	Magazine	50° 52.83'N 001° 23.98'W	230.0° (T) x 490 metres
				Bearing and Distance from CALSHOT RADAR SCANNER 50° 49.21'N 001° 18.50'W
3	70	Cathead	50° 50.61'N 001° 19.24'W	340.4° (T) x 2740 metres
4	71	Mark	50° 49.56'N 001° 18.94'W	319.5° (T) x 835 metres
5	74	Sposa	50° 49.66'N 001° 17.59'W	049.4° (T) x 1360 metres
6	4G	CUTTER	50° 49.45'N 001° 16.91'W	075.2° (T) x 1910 metres
7	4R	Darling Buoy	50° 49.18'N 001° 15.71'W	089.6° (T) x 3270 metres
8	4S	Royal Southern	50° 48.86'N 001° 15.43'W	098.8° (T) x 3485 metres
9	4L	William	50° 49.03'N 001° 16.49'W	096.7° (T) x 2360 metres
10	4C	Fumesy	50° 49.21'N 001° 17.46'W	088.7° (T) x 1210 metres
11	4J	hamblewinterseries.com	50° 48.63'N 001° 16.56'W	115.1° (T) x 2415 metres
12	4Q	John Fisher	50° 48.46'N 001° 15.72'W	111.8° (T) x 3540 metres
13	4E	JANE	50° 47.67'N 001° 17.00'W	147.1° (T) x 3350 metres
14	3S	Tack Gybe Set	50° 47.81'N 001° 19.25'W	197.6° (T) x 2743 metres
15	3N	Greenings Payments	50° 47.07'N 001° 19.88'W	201.0° (T) x 4290 metres
16	30	RORC	50° 47.12'N 001° 17.72'W	165.5° (T) x 3980 metres
17	3W	Williams Shipping	50° 47.20'N 001° 18.55'W	179.7° (T) x 3725 metres
-	48	Paul Heys	50° 48.21'N 001° 16.68'W	133.2° (T) x 2570 metres



**Vessel Traffic Services Centre
Ocean Dock, Atlantic Way
Southampton**

**Steven Masters
Harbour Master**

8th February 2022

Owners, Agents, Charterers, Marinas, Yacht Clubs and Recreational Sailing Organisations should ensure that the contents of this Notice are made known to the masters or persons in charge of their vessels or craft.