

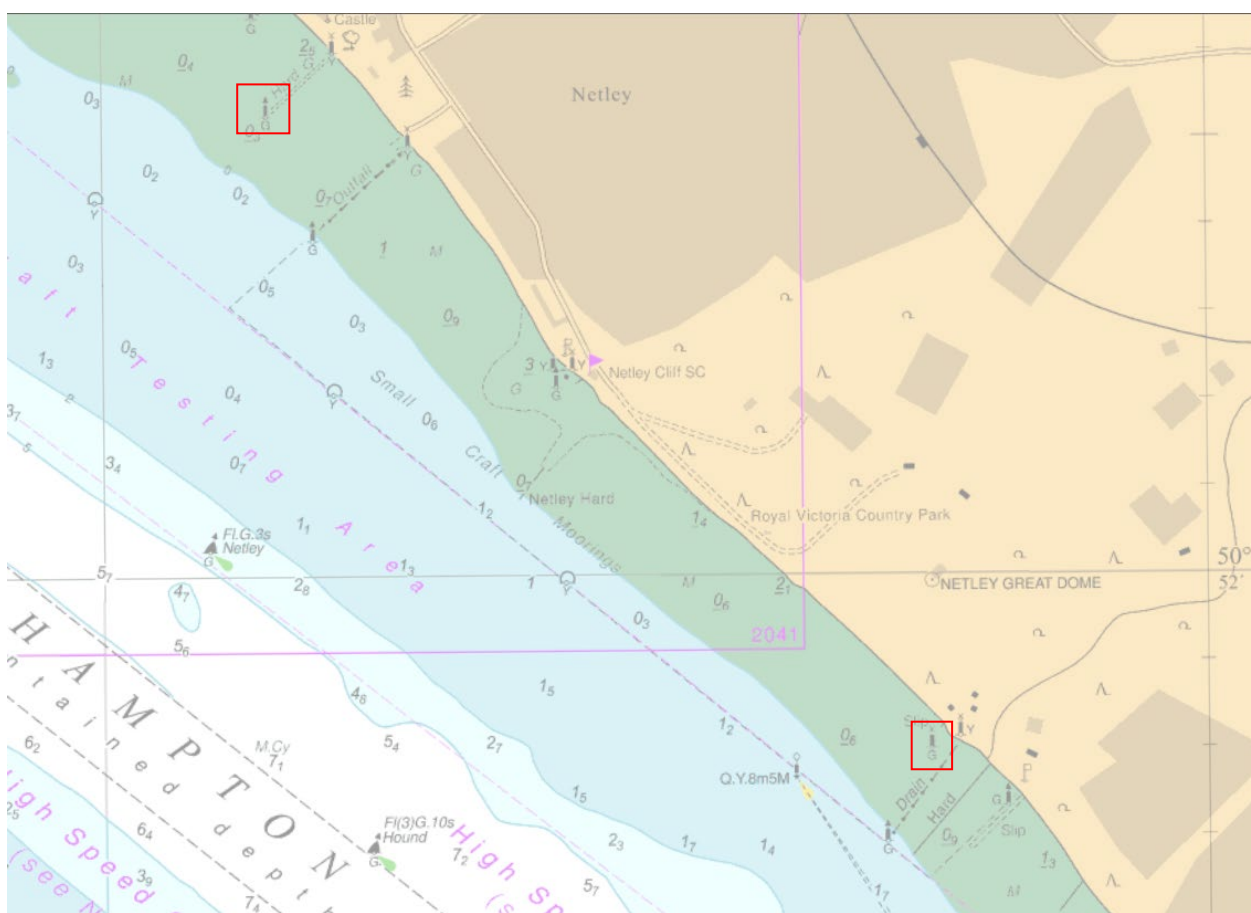
NOTICE TO MARINERS No 45 (T) of 2022 **Port of Southampton – Netley Outfall Beacons**

NOTICE IS HEREBY GIVEN- Two Outfall beacons have snapped and have been removed from service.

- 1- Netley Castle Outfall Beacon Seaward 001° 21' 44.197"W 50° 52' 39.00"N
- 2- British Aerospace Outfall Beacon 001° 20' 22.182"W 50° 51' 44.028"N

Vessels are requested to proceed with caution when navigating in the vicinity. Ahead of their passage, mariners may also request shipping information from Southampton VTS on VHF Channel 12.

This notice will be self-cancelling when the beacons have been returned to their charted positions



Vessel Traffic Services Centre
Ocean Dock, Atlantic Way
Southampton

Steven Masters
Harbour Master

9th May 2022

Owners, Agents, Charterers, Marinas, Yacht Clubs and Recreational Sailing Organisations should ensure that the contents of this Notice are made known to the masters or persons in charge of their vessels or craft.