

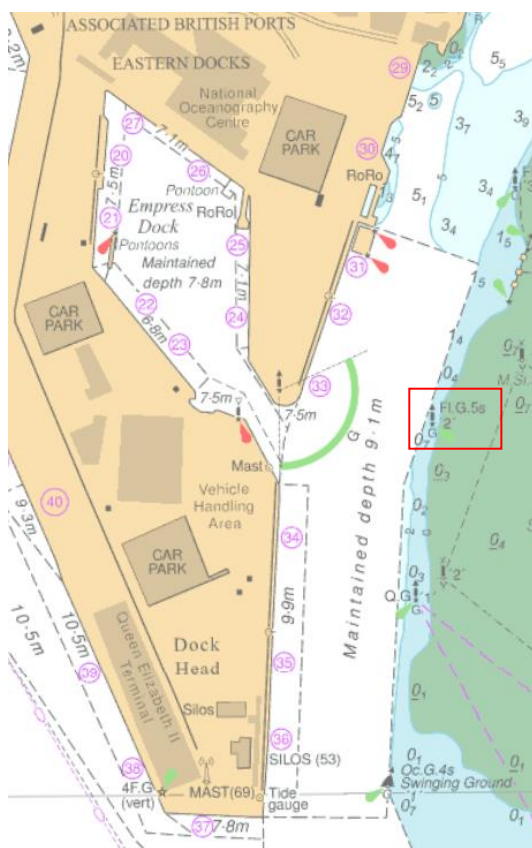
NOTICE TO MARINERS No 50 (T) of 2022
Port of Southampton – River Itchen Beacon No. 2

Amendment No.1

NOTICE IS HEREBY GIVEN that the River Itchen Beacon No. 2 is currently leaning.

Works to rectify the damaged pile will commence 28th June 2022

The beacon, located at 50° 53.292'N 001° 23.377'W, opposite the entrance to Empress Dock and as shown below, has been inspected for damage and will be replaced.



Vessels are requested to proceed with caution when navigating in the vicinity. Ahead of their passage, mariners may also request information from Southampton VTS on VHF Channel 12.

This notice will be self-cancelling when the beacon has been replaced.

Vessel Traffic Services Centre
Ocean Dock, Atlantic Way
Southampton

Steven Masters
Harbour Master

27th June 2022

Owners, Agents, Charterers, Marinas, Yacht Clubs and Recreational Sailing Organisations should ensure that the contents of this Notice are made known to

the masters or persons in charge of their vessels or craft.