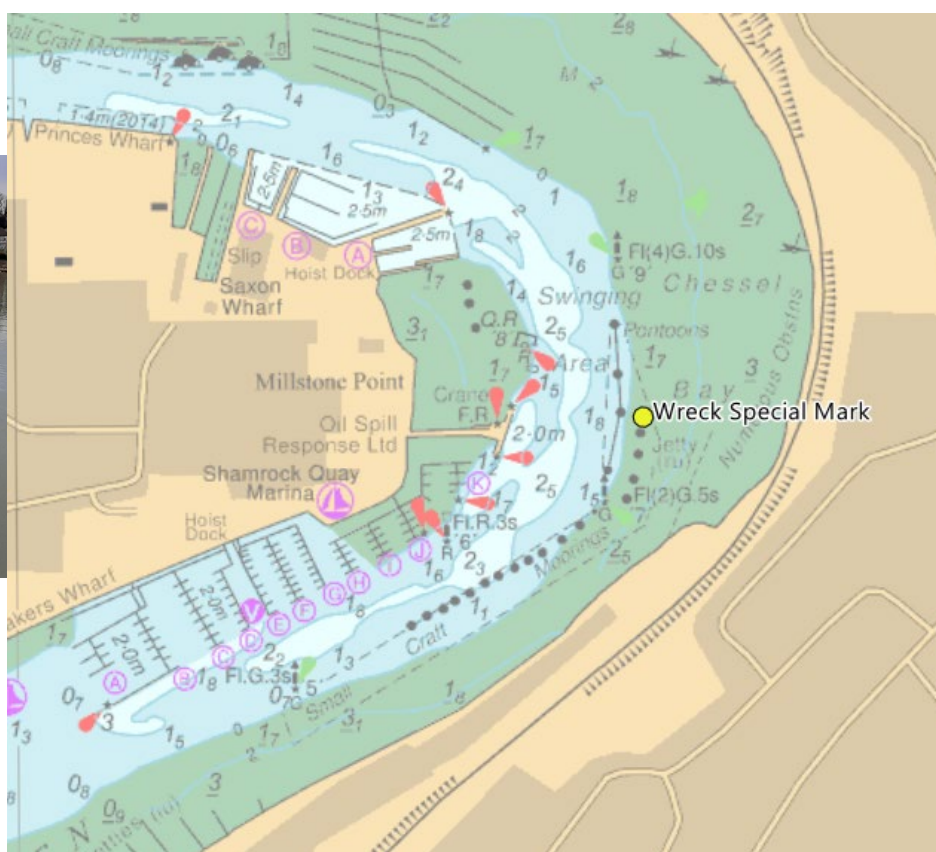


**NOTICE TO MARINERS No 25 (T) of 2020**  
**Port of Southampton**

**River Itchen Wreck Marked**

**NOTICE IS HEREBY GIVEN** - A wreck identified on the River Itchen in the south of Chessel Bay, has been marked with a FI Y 4s special mark pictured below. A drying height of 4m from Chart Datum has been recorded. Mariners are advised to keep well clear and navigate with caution in this area.

**Position 050° 54.649" N 001° 22.452W**



**Vessel Traffic Services Centre**  
**Ocean Dock, Atlantic Way**  
**Southampton**

**Steven Masters**  
**Harbour Master**

4<sup>th</sup> January 2021

**Owners, Agents, Charterers, Marinas, Yacht Clubs and Recreational Sailing Organisations should ensure that the contents of this Notice are made known to the masters or persons in charge of their vessels or craft.**